

GDF meetings do not aim to gather the greatest number of participants, only the most senior



GLOBAL DIRECTORS'
FORUM

2nd CEE PRIVATE EQUITY CONVENTION 2012

16-17 February 2012 London,
5* Sofitel St.James Hotel



a dialogue of minds™



Dear Participant,

Following the success of GDF's 2011 CEE & Northern Europe Private Equity Convention, GDF is proud to present to your attention our second event designed to bring together leading Investors, LPs and GPs from these markets for a frank and open exchange of experiences, opinions and ideas. In the true entrepreneurial spirit, the convention has become THE meeting place for the most senior and influential investors, LPs and GPs where deals are made and 2012 will be no exception. The 2nd CEE PEC offers the perfect venue for you to connect and do business in a highly productive and relaxed setting. More than 90% of GDF attendees report they make a critical business connection from attending.

2012 CEE PEC features capital providers with up to £30 billion in total available investment capital. We strongly believe that the most interesting opportunities lie on the borderlines of interests, discussions and in the forging of personal relationships.

The GDF's 2nd CEE & Northern Europe Equity Convention will have no speakers and no panelists, just informal discussions in small groups, where everyone participates equally. Our discussion groups are not panels, they are friendly and constructive conversations in a comfortable environment hosted and facilitated by co-moderators. You, as a participant, will be in charge of what issues you discuss and which groups you join.

Quality Interaction and Supreme Level of GDF members – is a key factor which GDF pursues in its premium networking facilities.

The ALCHEMY of our meetings – is the catalyst for our clients' success. A true dialogue of minds.

Our meetings do not aim to gather the greatest number of participants, but only the most senior.

Participation is by invitation only (or referral).

ALCHEMISTS OF SUCCESS



Nicholas Kabcenell
Darby Private Equity



Anne Fossemalle
EBRD



Piotr Nocoń
Resource Partners



Robert Manz
Enterprise Investors



Natalia Popova
Akina Partners



Tomasz Czechowicz
MCI Management SA



Jiri Bohal
*Investkredit Bank AG
Volksbank AG*



Dr. Franz Jurkowitzsch
*Warimpex Finanz
und Beteiligungs AG*



John Holloway
*European Investment
Fund (EIF)*



Marcin Hejka
Intel Capital



Global Economy and CEE – Are We Back to “7 Years Ago”?

Thorkil Christensen
Chief Financial Officer - Novo A/S



Thorkil Christensen

Sponsorship & Membership Enquiries

Victoria Cann
Tel: 0044 (0) 208 783 95 35
E: victoria@gdforum.co.uk

Moderators Enquiries

Konstantine Malinovski
Tel: 0044 (0) 208 783 95 35
E: konstantine@gdforum.co.uk

www.gdforum.co.uk

“Economic Power Shift” Towards BRIC – What Does It Mean for CEE Private Equity?

Marcin Hejka
Managing Director CEE, ME & Africa - Intel Capital



Marcin Hejka

Roman Matkiwsky
Founder / Managing Director - Zenith Capital



Roman Matkiwsky

MEDIA PARTNERS



German Private Equity and Venture Capital Association



Polskie Stowarzyszenie Inwestorów Kapitałowych
Polish Private Equity Association



Tougher Times in a Contracting Industry – What needs to be done to Survive?

Michał Popiołek
Head of Mezzanine Finance - BRE Bank



Michał Popiołek

Michael Rostock – Poplar
Founding Partner – Venture Investors
Corporate Finance



Michael Rostock-Poplar

Michał Chałaczkiwicz
Director - Montagu Private Equity



Michał Chałaczkiwicz

Dr. Hanns Ostmeier
President - German Private Equity and Venture Capital Association (BVK)



Dr. Hanns Ostmeier

Were the Last “Fat” Years Used Well by CEE GPs and Who Will Survive the “Era of Austerity”?

Robert Manz
Managing Partner - Enterprise Investors



Robert Manz

Jacek Pogonowski
Partner - Value4Capital



Jacek Pogonowski

Hannes Ambacher
Managing Director for Private Equity - Bank Gutmann Group



Hannes Ambacher





The New Reality in the CEE – Is PE Funds Past Performance a Guarantee for the Future?

Witold Radwański
Managing Partner - Krokus Private Equity

Anne Fossemalle
Director, Equity Funds - EBRD

Chris Buckle
Managing Partner - Mezzanine Management GmbH



Witold Radwański



Anne Fossemalle



Chris Buckle

Buying banks/financial institutions: is this the right time?

Michiel Schwartz
Managing Director - Black-Oak Capital Ltd



Michiel Schwartz

“Lost in the Daily Race” – The Future Issues We Need to Face Now

Natalia Popova
Principal - Akina Partners



Natalia Popova

PE and Banks – Is Private Equity Filling Up the Gap of Less Conventional Bank Project Financing?

Dr. Franz Jurkowitsch
CEO - Warimpex Finanz und Beteiligungs AG

Ilan Azouri
Founder - Ilan Azouri & Co' Investments



Dr. Franz Jurkowitsch



Ilan Azouri

Exits in the Current Economic Climate – Trends and Choice?

Tomasz Czechowicz
Managing Partner - MCI Management SA

Les Nemethy
Managing Director - Europhoenix Financial Advisors

Petr Kováč
Chairman of the BoD, Executive Director - Patria Corporate Finance



Tomasz Czechowicz



Les Nemethy



Petr Kováč

Private Equity and Banks – Finding Common Ground at the Era of De-Leveraging

Jiri Bohal
Managing Director - Investkredit Bank AG Volksbank AG
Nicholas Kabcenell
Managing Director - Darby Private Equity, Franklin Templeton Investments



Jiri Bohal



Nicholas Kabcenell

Renewable Energy as an Emerging Private Equity Asset Class – How to Manage Risks as an Early Stage Investor?

Michael White
Founding Partner - EnerCap Capital Partners



Michael White

“Small Is Beautiful” – Are Smaller (3-10 million) Transactions the Way Forward for the CEE?

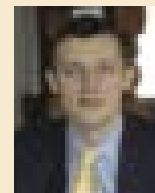
Zbigniew Łapinski
Partner - 3TS
Martin Kodar
Partner, CFO - BaltCap
Radoslav Tausinger
Senior Investment Manager - GiMV NV
Barbara Nowakowska
Managing Director - PSIK / PPEA



Zbigniew Łapinski



Martin Kodar



Radoslav Tausinger



Barbara Nowakowska

Doing Deals – Are the CEE Entrepreneurs Ready for Private Equity Already?

Martin Paev
Chairman - Sortis Group
Piotr Noceń
Founder & Managing Partner - Resource Partners
Oksana Strashna
Partner - Horizon Capital Advisors



Martin Paev



Piotr Noceń



Oksana Strashna



FUND RAISING DISCUSSION GROUP

Is CEE Really Thought of as an Emerging Market any Longer – And What Does It Mean for GPs?

John Holloway
Director of Operations, Venture Capital Operations - European Investment Fund (EIF)



John Holloway

Registration Form

2nd CEE & Northern Europe Private Equity Convention February 16-17, 2012, London UK

YOUR DETAILS

Mr/Mrs/Dr First Initials Last

Position Nick/Badge Name

Direct Tel Email

Fax Company

Assistant Tel Email

Address

Division's web address

<input type="checkbox"/> INVESTOR	<input type="checkbox"/> CORPORATE (USER)	<input type="checkbox"/> ECONOMIC DEVELOPMENT
<input type="checkbox"/> INSTITUTIONAL INVESTOR	<input type="checkbox"/> MEDIA	<input type="checkbox"/> ACADEMIC (think tank)
<input type="checkbox"/> PRIVATE EQUITY FIRM (GP)	<input type="checkbox"/> LAWYER	<input type="checkbox"/> ADVISOR (accountant/tax)
<input type="checkbox"/> LENDER	<input type="checkbox"/> COMPANY	<input type="checkbox"/> OTHER <i>please state below</i>
<input type="checkbox"/> INVESTMENT BANK	<input type="checkbox"/> GOVERNMENT (OFFICIALS)	
<input type="checkbox"/> TRADE (group/exhibit/conference organiser)		

TELL US YOUR INTERESTS (optional)

- Global Economy and CEE - Are We Back to "7 Years Ago"?**
- "Economic Power Shift" Towards BRIC - What Does It Mean for CEE Private Equity?**
- Tougher Times in a Contracting Industry - What needs to be done to Survive?**
- Were the Last "Fat" Years Used Well by CEE GPs and Who Will Survive the "Era of Austerity"?**
- The New Reality in the CEE - Is PE Funds Past Performance a Guarantee for the Future?**
- Buying banks/financial institutions: is this the right time?**
- "Lost in the Daily Race" - The Future Issues We Need to Face Now**
- PE and Banks - Is Private Equity Filling Up the Gap of Less Conventional Bank Project Financing?**
- Exits in the Current Economic Climate - Trends and Choice?**
- Private Equity and Banks - Finding Common Ground at the Era of De-Leveraging**
- PE Investment in Distressed Assets - What, Where and How?**
- Renewable Energy as an Emerging Private Equity Asset Class - How to Manage Risks as an Early Stage Investor?**
- The Current State of Venture Capital Investments in the CEE - The Challenges and Prospects in the Next 3 years**
- "Small Is Beautiful" - Are Smaller (3-10 million) Transactions the Way Forward for the CEE?**
- Doing Deals - Are the CEE Entrepreneurs Ready for Private Equity Already?**
- Is CEE Really Thought of as an Emerging Market any Longer- And What Does It Mean for GPs?**

We would appreciate if you could indicate discussion groups from the list shown on the left that interest you the most. This information does not represent your commitment to come to the discussions you have marked, or put you under any other obligation and is collected solely for the purpose of efficient room management.

PAYMENT DETAILS

Card type Visa Mastercard Amex

Card number

Name on card

Expiry date Card security code (on reverse)

Signature

Credit card billing address (if different from above)

Delegate Status	Registration fee (inc. 15% discount)
Co- Moderators*	<input type="checkbox"/> 1104 GBP + VAT
Limited Partners**	<input type="checkbox"/> Complimentary by application (subject to review & availability)
Investors	<input type="checkbox"/> 1274 GBP + VAT
Non- Investors	<input type="checkbox"/> 1529 GBP + VAT

Yes, please register me as a delegate at a cost (tick one of the above options) + UK VAT. I confirm that I have read and accepted the terms and conditions below.

By Bank Transfer
 Account Name: Global Directors' Forum Ltd
 Bank Name/Address: HSBC 94 Albany Road, Cardiff CF24 3RT
 ACCOUNT NUMBER: 91578537 SORT CODE: 40-16-35
 VAT No: GB 869 2343 91
 IBAN: GB 05MIDL40163591578537 BIC: MIDLGB 2124F

Hotel Venue Sofitel St.James Hotel ★★★★★
 6 Waterloo Place, London, SW1Y 4AN, UK
 Tel: +44 (0)20 7747 2200 Fax: +44 (0)20 7747 2210
 Web: www.sofitelstjames.com
 Always ask for GDF rate. Direct bookings with the hotel (not through travel agents) benefit from specially negotiated rate for GDF clients.

TERMS AND CONDITIONS

- The event fees do not include travel or accommodation.
- Payment is required by return. Delegate fee must be paid in full prior to the event or admission is regrettably not possible.
- Confirmation will be sent on receipt of payment. If you have not received confirmation within 14 days of registration, please contact us to confirm your booking.
- Registered delegates may cancel their registration and a credit voucher will be issued to you for the full amount paid, redeemable against any other GDF event. If you wish, you may request a refund of fees paid less an administrative charge of 25% per delegate, providing they notify the Organisers in writing

- prior no later 31 December 2011. Verbal cancellations will not be accepted. The administrative charge will apply regardless or whether or not a registered delegate has made any payment by this date.
- We regret that cancellations received after 31 December 2011, and those not put in writing, cannot be accepted and the delegate will be liable for the full registration fee regardless of whether or not they have paid.
- Substitution of delegates is permitted at no extra cost but only prior to the event itself.
- Global Directors' Forum Ltd reserves the right to cancel the event if it considers it necessary and will, in such event, refund any fees paid in full. Global Directors' Forum Ltd reserves the right to deny a registration request and access to the event to whomsoever it deems appropriate. Global Directors' Forum Ltd assumes no liability for changes in programme date, content, speakers and venue.

* Please note - only industry principals can join discussion groups as co-moderation
 ** For Limited partners joining as co-moderators is complimentary or as delegate after 3rd January is £199 GBP +VAT (subject to review and availability)